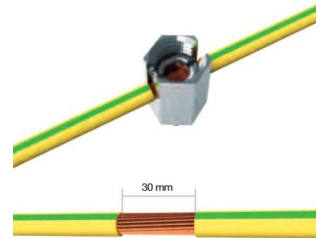




ELIT SFP4RE6



Equipotential bonding connector w/M6 bolt 4-10 mm²

Technical description

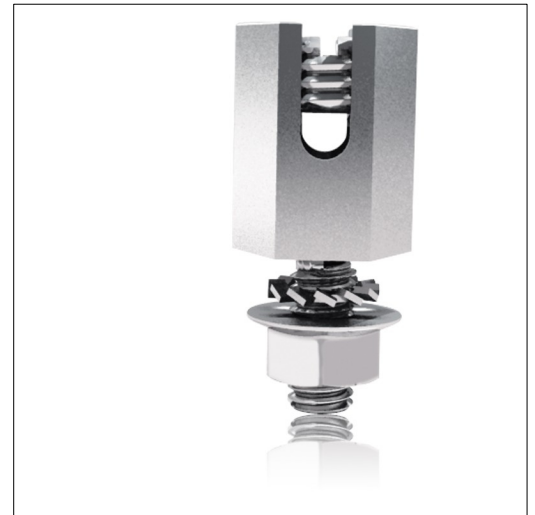
Equipotential bonding terminal with sheet metal screw (no. 10, Ø4.8 mm) and a connection capacity of 4, 6, 10, 4+4, 6+6 mm². Used to make high-quality electrical contact between the earth conductor and the device to be equipotentially bonded, for example between panel frames, cable bridges, cabinets and earth conductor. Available with sheet metal screw, self-drilling screw or M6 bolt. Material is stainless steel. Clamping capacity for stranded or solid earth conductor. The connection capacity is 4, 6, 10, 4+4, 6+6 mm².

Advantages:

Equipotential bonding terminal made of stainless steel (V2A)

Integrated with M6 bolt

Provides good electrical contact between the ground conductor and the device to be equipotentially bonded



Product name/ Art.nr/ GTIN	ELIT SFP4RE6/ 30180011/ 7070810003914
According to:	---
Suitable for	Round conductor
Connection cross section	4 - 10 Square millimetre
Material	Stainless steel
Surface protection	Untreated